

# Public Engagement Board

## COVID-19 Programme Team

CLT Lead: Helen Gollins, Director Public Health Trafford

1 December 2021

### Data surveillance update paper to Public Engagement Board

#### Report Summary:

This paper provides an update on the current data position for COVID-19 within Trafford and provides comparative information with other GM localities. Data insights into any potential trends are provided based on best available public health information and intelligence available.

Trafford's Public Health Team are ensuring that our systems are fit for purpose in light of reports of a new variant. At the time of publication (29/11/21) there are no known cases of Omicron in Trafford.

---

#### Overview of the current position:

##### Overview

- There were **997** confirmed cases during the week ending Wednesday 24 November, with the highest number of cases (**183**) reported on **Monday 22 November**.
- We have seen an increase in our 7 day case rate to **419.6/100k** from **384.7/100k** in the previous week. Most recent data suggests we will see further increases in our case rate over the coming days.
- Trafford's case rate is above the North West average (**377.7/100k**) but below the England average (**440.1/100k**). Trafford has the 3<sup>rd</sup> highest case rate across GM.
- Trafford's testing (at **582.7/100k** from **562/100k**) and positivity rate (at **10.6%** from **10%**) has increased slightly from the previous week.

##### Age Profiles

- When compared to the previous week, case rates have increased for all age groups below 60 years.
- Case rates are now highest for 5-9 year olds (at **1189.8/100k**), increasing by **53.9%** from the previous week.

- We have seen further rate reductions for residents aged 60+, decreasing to a rate of **122.3/100k** from **133.4/100k** in the previous week.
- We have seen further PCR testing increases for 0-14 year olds, whilst testing is mostly stable for the adult population.

### Geography

- Cases are widespread across the borough. We are now starting to see more variation in case rates by geography.
- Case rates are lowest in Trafford North.
- Case rates are highest for the wards of Priory (**680/100k**), Hale Central (**609.5/100k**), Davyhulme West (**549.5/100k**), Bowdon (**547.3/100k**), and Ashton upon Mersey (**543.2/100k**).
- Case rates have increased most for Trafford Central during the most recent week: Priory (**+135.3%**) and Brooklands (**+67.7%**).

### Hospital Activity

- We have seen a reduction in hospital admissions over the past four weeks. We are seeing a similar trend for the North West region.
- There were **114** COVID-19 admissions during the week ending Sunday 21 November compared with **130** COVID-19 admissions during the previous week (*Including Manchester University Foundation Trust, Stockport Foundation Trust, and Warrington & Halton Teaching Hospitals Foundation Trust*).

---

## Public Health Concern

Trafford's case rate reached the highest in the country on 9<sup>th</sup> October 2021 after peaking at a rate of **846.8/100k** (for the 7 days up to 09 October). We have seen a sharp reduction in Trafford's case rate since early October, however most recent data shows an increase, with rates above 400/100k. Case rates have been increasing for young persons below the age of 17 over the past two weeks, and more recently (past week) for adults below the age of 60.

Our testing rate remains highest across the 10 GM boroughs, with little change over the past two weeks. Most recent data, however, shows an increase in the number of tests by Trafford residents. We are also starting to see a slight rise in our positivity rate, although 4<sup>th</sup> lowest across the 10 GM boroughs.

Despite recently dropping below the England average (**439.8/100k** for the 7 days up to 24 November), our case rate remains high, well above the North West average (**377/100k**). We need to halt and reduce our current rate to protect our vulnerable populations, especially those aged 60+ and/or with preexisting health conditions.

The successful roll-out of COVID-19 vaccinations, including booster vaccinations has helped weaken the link between infection and hospital admissions/COVID-19 mortality, however there are still just under 1/5 of eligible residents not vaccinated with at least 1 dose. Despite the successful roll out of the vaccine programme, we have seen inequalities in uptake, specifically linked to decreasing age and geographical areas with highest levels of deprivation. We are seeing a consistent trend in these inequalities as the vaccine has been rolled-out to younger age groups.

Although the North West (including surrounding hospitals to Trafford) has recently seen an overall reduction in hospital admissions linked to COVID-19, hospitals have still experienced a sustained period of COVID-19 admissions, ever since the relaxation of lockdown measures in July 2021. We are now coming into the winter months where NHS pressures increase, and thus the need to keep hospital admissions low is imperative. Overall mortality trends is also a growing concern, as since the beginning of the pandemic (March 2020), registered deaths exceed expected deaths (1.13 times nationally; 1.14 times for Trafford).

Vaccines offer protection but risk of infection is still present if borough-wide transmission is not controlled. We have started to see case rates stabilise over the past two weeks, however we recognise that we must not be complacent as a borough and we will continue to focus our efforts on reinforcing COVID-19 secure measures. We will continue to support areas with lower uptake of vaccinations (especially in over 60s) for preventative measures and to improve vaccination uptake.

## **Outbreak Management and Risk Reduction**

### **Business settings**

- From 4am Tuesday 30 November, face coverings will be compulsory in shops and other settings such as banks, post offices and hairdressers, as well as on public transport unless individuals are exempt from doing so.
- Travellers arriving into the country from 4am on Tuesday 30 November will be required to take a PCR test on or before day two and self-isolate until they have received a negative test result. These PCR tests can be purchased from private providers. Free NHS tests are not valid for this purpose.
- We continue to urge all businesses to make their workplaces COVID-19 secure, including ensuring that staff are routinely testing and properly protected when they return to the workplace.
- We continue to promote the importance of COVID-19 vaccinations for all eligible populations.
- We are monitoring the impact of events on Covid rates in the borough.

### **Health & Social Care Settings**

- We need to work together to keep our most vulnerable populations protected. We are managing outbreaks in care homes. While some fully vaccinated staff and

residents are testing positive, their disease is much milder than in unvaccinated people.

- Care home should continue to PCR test residents and staff every 28 days and staff should also do twice weekly LFD testing.
- Vaccination remains a safe and effective method of protecting yourself from severe illness.
- We will be encouraging all health and social care settings to continue to use all the current infection prevention and control measures to keep staff and service users safe.
- Trafford have recommended that providers pause indoor visiting by children and young people aged 16 and under. Exceptions include end of life visits, and visits that include outdoor socially distanced visits. This enhanced measure was reviewed on 29/11 and the recommendation is that it continues for a further two weeks. Safe visiting support is being developed by Public Health and commissioning.

## Education & Early Years Settings

- Secondary school pupils should continue with twice weekly LFD testing and all staff/pupils should wear face coverings in communal areas.
- We'd like to encourage people to register negative LFD test results on the national testing portal.
- Any children identified as a close contact should have a PCR test.
- School **household contacts**; children and young people and staff who attend/work in schools and are household contacts should do daily LFD testing for a period of 10 days.
- There are currently enhanced measures in Trafford's early years and education settings which includes the wearing of face coverings. Given the current COVID-19 Omicron national guidance, face coverings and other enhanced measures will be reviewed in three weeks' time.

## Contact Officer:

Name: Tom Seery, Public Health Data Surveillance Analyst

Tel: 07929876642

Email: [Thomas.seery@trafford.gov.uk](mailto:Thomas.seery@trafford.gov.uk)

---

## 1.0 Vulnerable Population groups

1.1 We have seen a sharp reduction in cases for residents aged 60+ over the past two weeks.

1.2 Table 1 shows that we are now starting to see less variation in the 60+ case rate by geography. Rates are highest for Trafford Central and lowest for Trafford North.

**Table 1. Case count and incidence per 100,000 population by ethnicity**

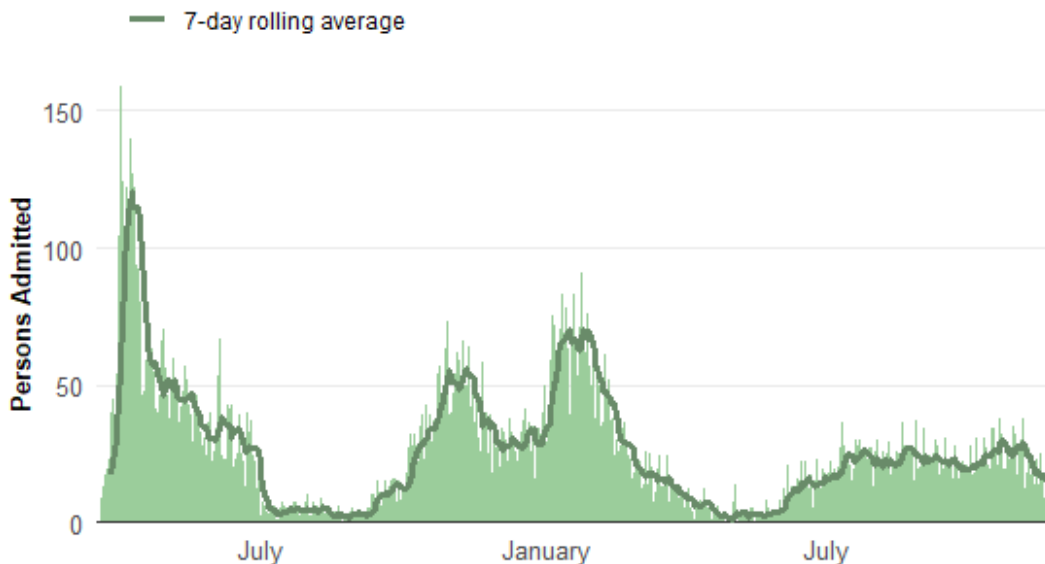
Trafford, 11 October to 24 November 2021

	Previous Week	Current Week	Percentage Change
Central	153.5	184.2	-25.0
South	123.8	92.9	33.3
West	103.1	162.0	-36.4
North	94.5	94.5	0.0

1.3 We have seen further reductions in the number of hospital admissions associated with COVID-19 over the past week. We are also seeing a similar trend in reducing hospital admissions for the North West region

**Figure 1. Daily Count of COVID-19 Hospital Admissions** (including *Manchester University Foundation Trust, Stockport Foundation Trust, and Warrington & Halton Teaching Hospitals Foundation Trust*).

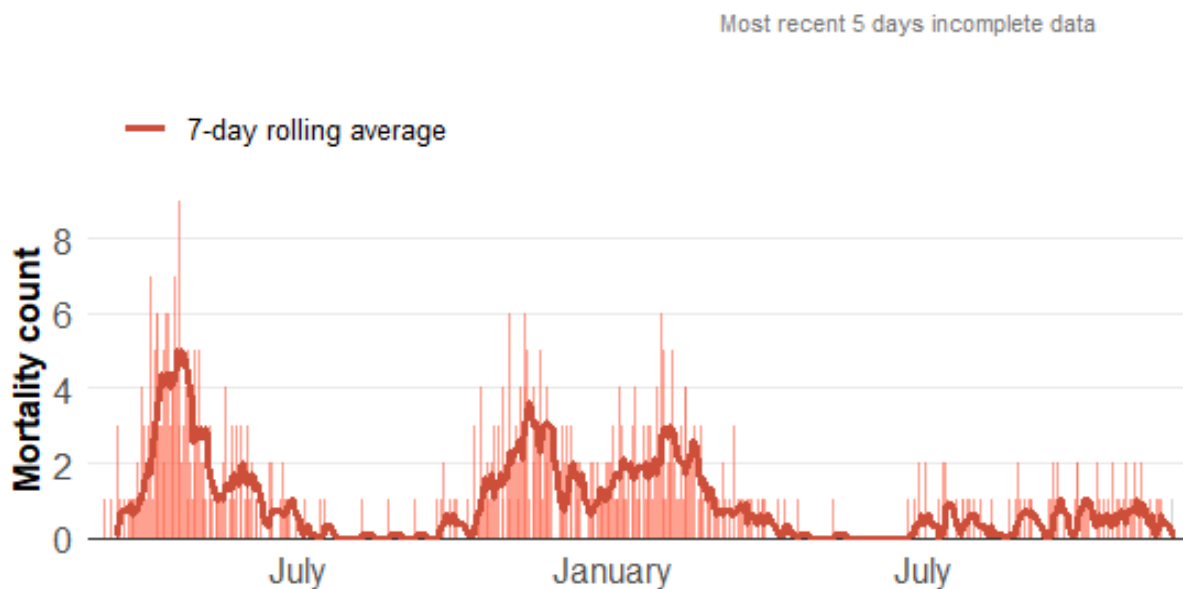
19 March 2020 to 21 November 2021



Source: PHE Coronavirus Dashboard

1.4 We have seen small reductions in the number of deaths linked to COVID-19 over the past 4 weeks (when compared to the previous 2-week period).

**Figure 3.** Daily Count of COVID-19 deaths within 28 days of positive test result  
11 March 2020 to 27 November 2021



## 2.0 Trend of COVID-19 cases within Trafford

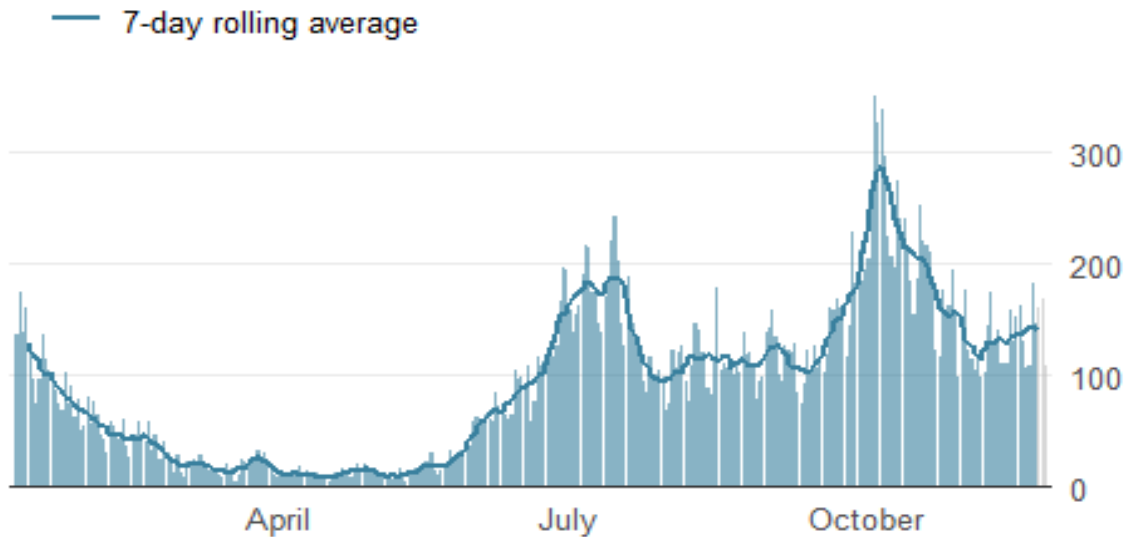
2.1 Daily positive cases spiked in early October, exceeding 300 daily cases and leading to a 7-day case rate greater than **800/100k**.

2.2 Our case rate peaked at a rate of **846.8/100k** for the 7 days up to October 9th, reaching highest in the country.

2.3 Case rates dropped throughout the month of October and moving into early November. We have seen mostly stable case rates over the past two weeks, however recent days shows an increase in daily cases, increasing our case rate back above **400/100k**.

### Figure 3. Epidemic curve of daily confirmed new cases

Trafford, 28 December 2020 to 26 November 2021



### 3.0 Age profiles

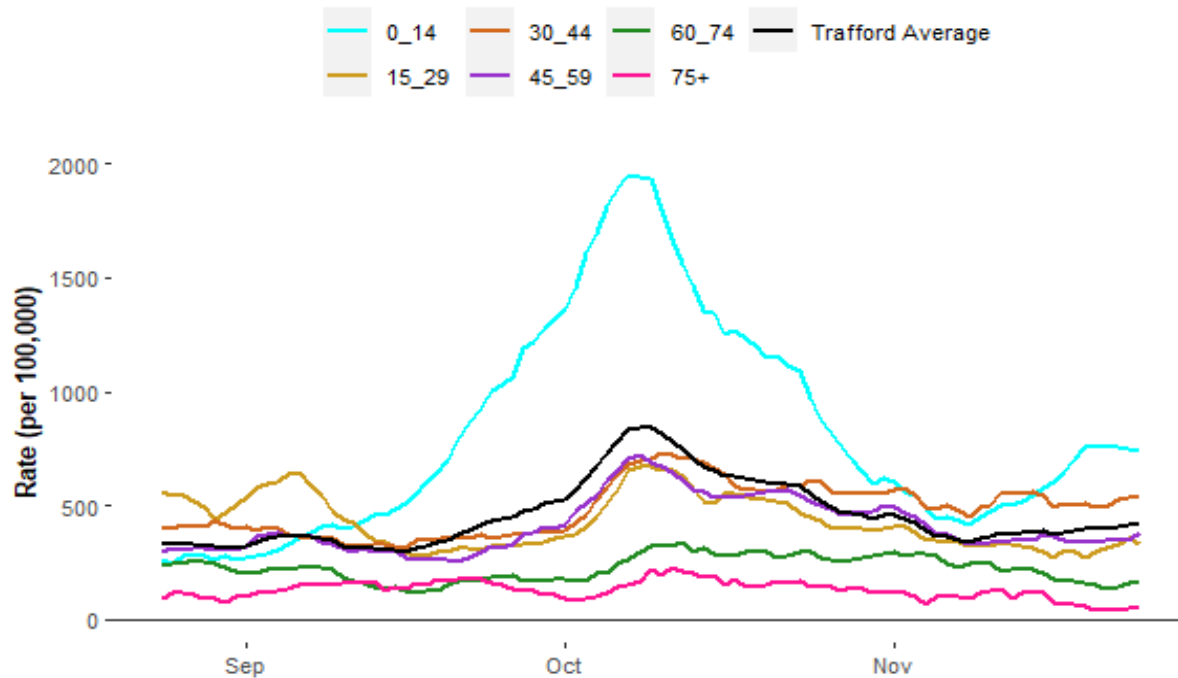
3.1 When compared to the previous week, case rates have increased for all age groups below the age of 60.

3.2 Case rates remain highest for 0-14 year olds (at **740.5/100k** from **645.8/100k** in the previous week) but most recent days shows a levelling-off of rates for this age group.

3.3 Case rates remain low for residents aged 60+, dropping to **122.3/100k** from **133.4/100k** in the previous week.

**Figure 4. Age-specific case rates per 100,000 population Trafford, 7-day moving average)**

Trafford, 26 August 2021 – 24 November 2021



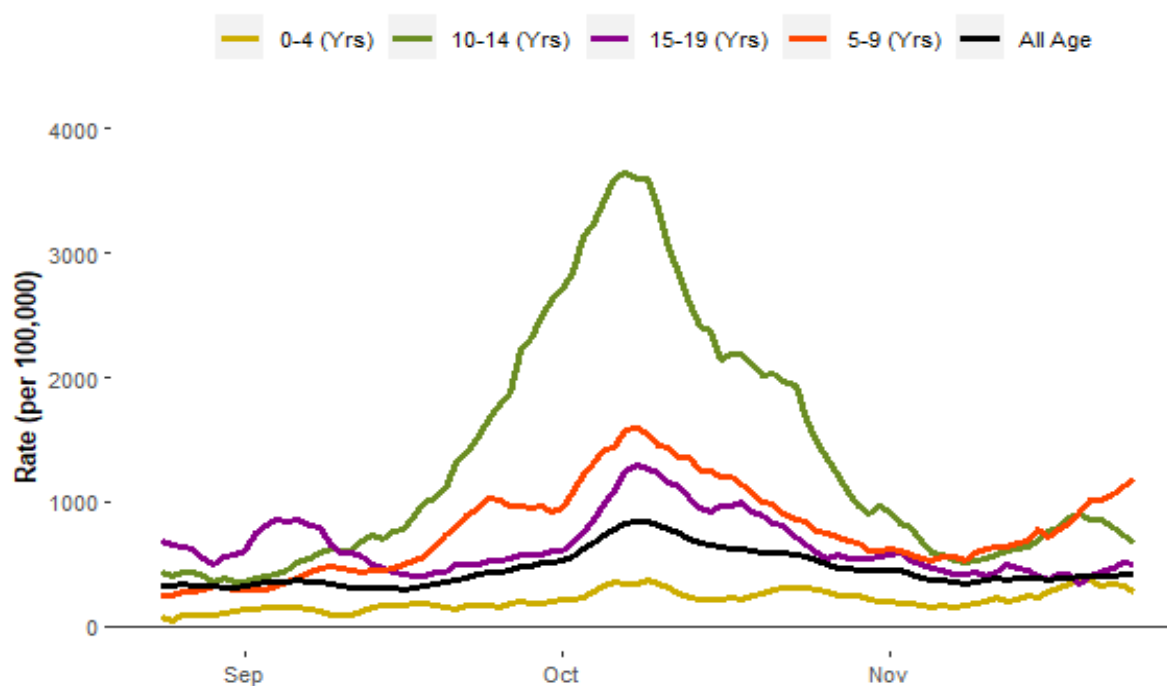
3.4 Case rates have continued to rise for young persons aged 5-9, whilst rates have started to drop for 10-14 and 0-4 year olds.

3.5 Case rates are highest for 5-9 year olds (at **1189.8/100k**), increasing by **53.9%** from the previous week.

3.6 Case rates are mostly stable for 15-19 year olds, but are above the Trafford average.



**Figure 5. School case rate per 100,000 residents (7-day moving)**  
Trafford, 26 August to 24 November 2021



---

## 4.0 Geographical spread of COVID-19 in Trafford

4.1 Case rates have increased for 12 wards, dropped for 8 wards, and remain unchanged for 1 ward when compared to the previous week.

4.2 We are seeing case rates widespread across the borough, but are starting to see more variation in rates by geography as rates are lowest in Trafford North when compared to Trafford's 3 other localities.

4.3 Case rates have increased most for Trafford Central during the most recent week: Priory (+135.3%) and Brooklands (+67.7%).

4.4 Case rates are highest for the wards of Priory (680/100k), Hale Central (609.5/100k), Davyhulme West (549.5/100k), Bowdon (547.3/100k), and Ashton upon Mersey (543.2/100k).

---

## 5.0 PCR Testing

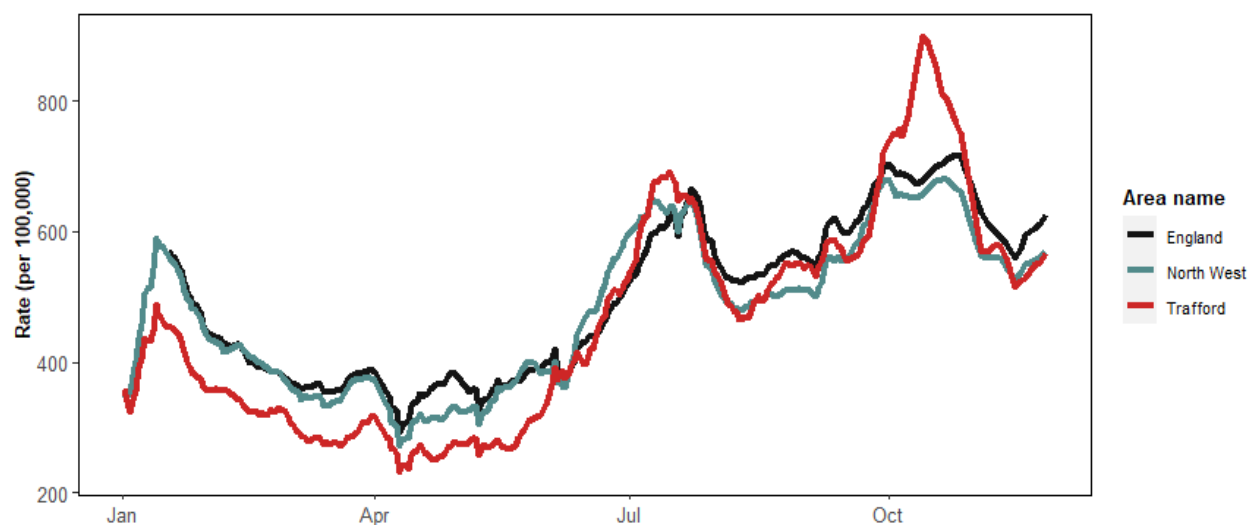
5.1 Trafford's testing rate peaked on October 10<sup>th</sup>, carrying out **900** daily tests per 100,000 residents, well above the England and North West averages.

5.2 We have seen a sharp reduction in testing since early October and more recently closely resembling the average testing rates for England and the North West.

5.3 However, data over the most recent week shows an increase in Trafford's testing rate, as well as national and regional increases.

5.4 As of November 24, Trafford's daily testing rate sits at **582.7/100k** which is an increase from the previous week (**562/100k**). Trafford's testing rate is above the North West average (**567/100k**) but below the England average (**642.4/100k**).

**Figure 6. Daily testing rate (7-day average): England, North West, & Trafford**  
Trafford, 01 January to 22 November 2021

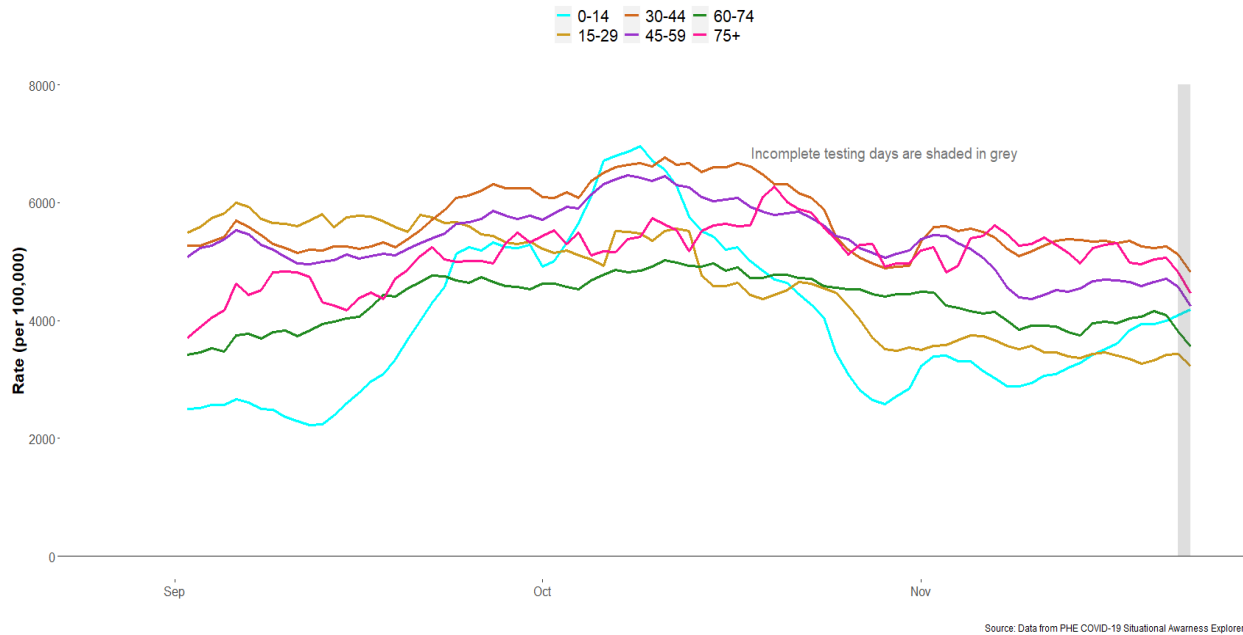


5.5 When compared to the previous week, testing rates have continued to rise for 0-14 year olds, but have been mostly stable for all other age groups.

5.6 Most recent days show a slight increase in testing for 45-74 year olds.

5.7 Testing rates are now highest for 30-44 year olds, followed by residents aged 75+.

**Figure 7. Age-Specific Testing rate per 100,000 residents (7-day moving)**  
 Trafford, 2 September to 23 November 2021

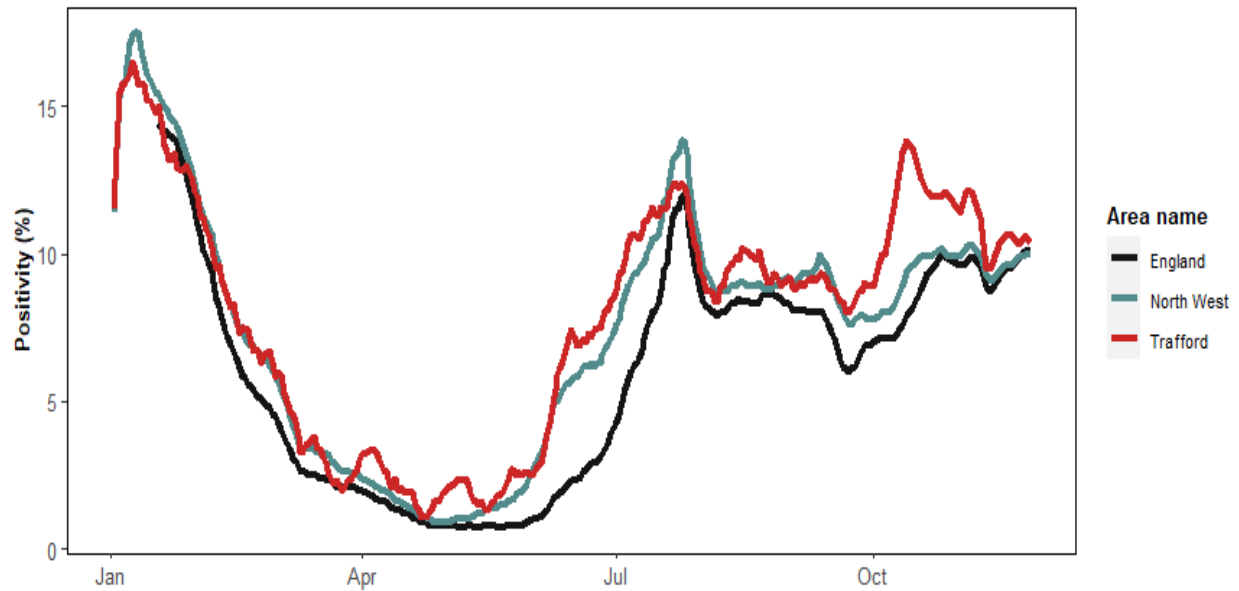


## 6.0 Positivity

6.1 Following a 3-week period where we were seeing reductions in our positivity rate, we have started to see an increase in positivity, remaining above the North West and England averages.

6.2 As of November 24, Trafford's 7-day positivity rate sits at **10.6%** which is an increase from the previous week (**10%**). Trafford's positivity rate is above the North West (**9.8%**) and England averages (**10%**).

**Figure 8. 7-day Positivity rate: England, North West, & Trafford**  
Trafford, 01 January to 22 November 2021



---

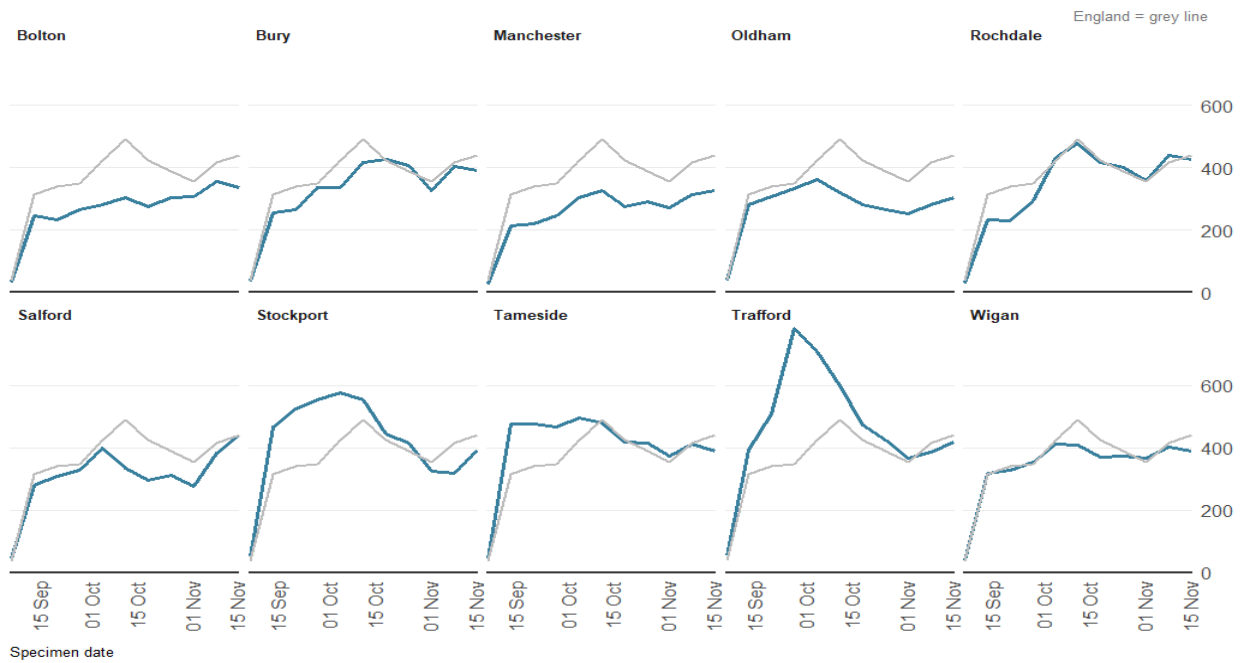
## 7.0 Comparative data of COVID-19 cases within the local authorities of Greater Manchester

7.1 Trafford saw the sharpest rise in its case rate throughout September and October, followed by Stockport.

7.2 Most recent data shows that most boroughs are starting to see an increase in their case rate. Salford is the only borough to have a higher rate than the England average (for the 7 days up to November 24).

7.3 Trafford has the 3<sup>rd</sup> highest case rate across the GM boroughs.

**Figure 9. Weekly incidence per 100,000 population by local authority**  
Greater Manchester, 18 September to 24 November 2021



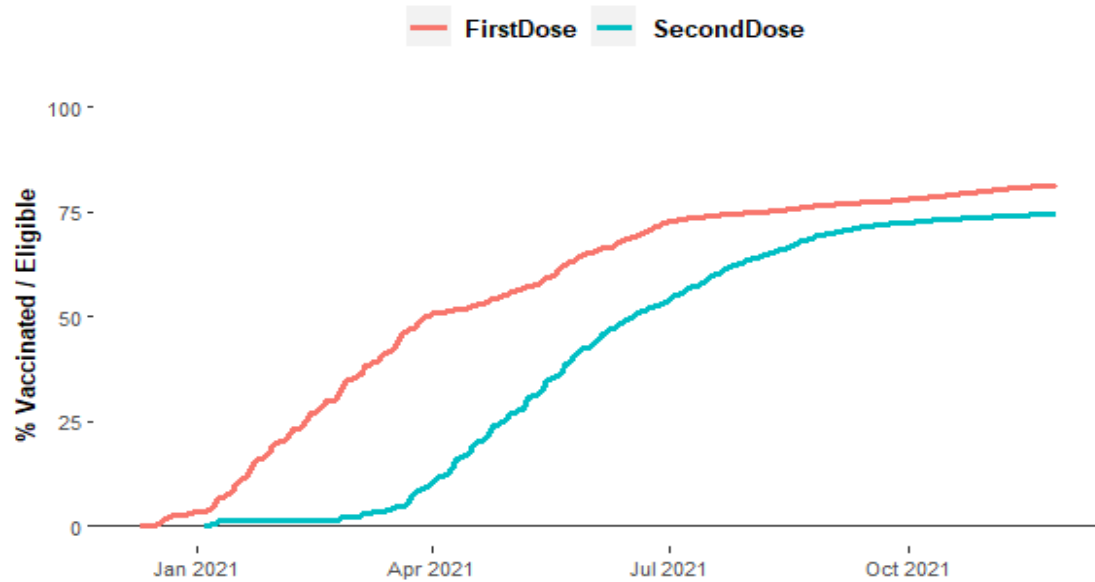
## 8.0 Vaccinations

8.1 The total percentage of Trafford residents (Aged 12+) administered their first vaccine dose by **27-11-2021** was **81.5%**

8.2 The total percentage of Trafford residents (Aged 12+) administered both vaccine doses by **27-11-2021** was **74.6%**

### Figure 10. Running total of first and second dose vaccines for Trafford residents (12 years and above)

Trafford, 09 December to 27 November 2021



Source: COVID-19 Situational Awareness Explorer

8.3 Vaccine uptake is lowest in Trafford North and highest for Trafford South.

8.4 We are seeing variation in vaccine uptake (first dose) across the borough, ranging from **64.8%** (Clifford ward) to **89.3%** (Timperley ward).

